

TABUADA DO 6

$6 \times 1 =$

$6 \times 2 =$

$6 \times 3 =$

$6 \times 4 =$

$6 \times 5 =$

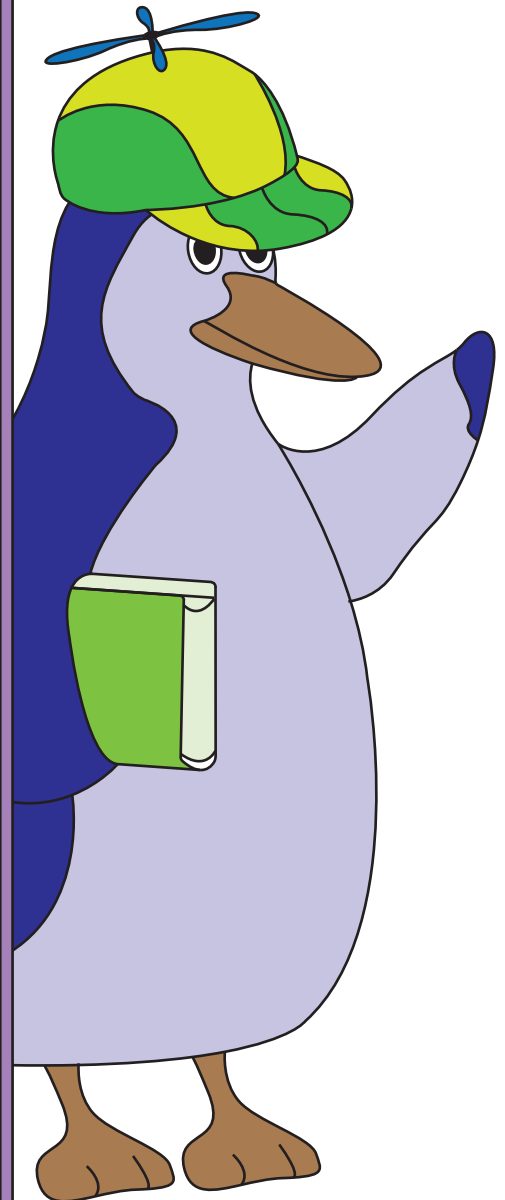
$6 \times 6 =$

$6 \times 7 =$

$6 \times 8 =$

$6 \times 9 =$

$6 \times 10 =$



TABUADA DO 6

$6 \times 1 = 6$

$6 \times 2 = 12$

$6 \times 3 = 18$

$6 \times 4 = 24$

$6 \times 5 = 30$

$6 \times 6 = 36$

$6 \times 7 = 42$

$6 \times 8 = 48$

$6 \times 9 = 54$

$6 \times 10 = 60$

